

# Accessories



Because of research, development and constant product improvements Zacklift reserves the right to make changes in design and price without prior notice

## #Z10-1012X Heavy Duty Multi Position Wheel Lift

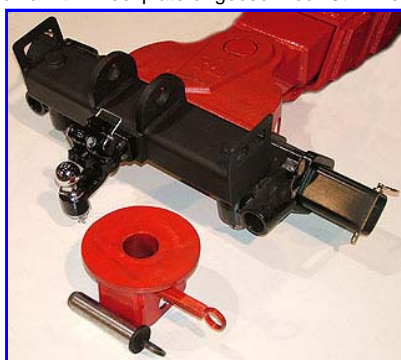
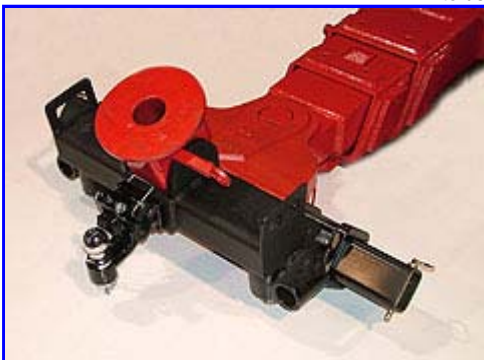
The Heavy Duty Multi Position Wheel Lift extends the use of your Zacklift to a damage free wheel lift with this uniquely engineered accessory. Adjust to accommodate tire sizes from 15" to 24.5". Lift rating is 15,000 lbs. The assembly comes complete with a second grid cross bar to allow for wide hauls such as tractors or luxury coaches from the front. The longer cross bar is also perfect for use with frame forks to accommodate an exceptionally wide axle. The narrow 43" cross bar can be used for duals and small axles. Wheel retainers slide to adjust to any width on either cross bar. The assembly includes 3" tie down straps and ratchets.

[Watch Wheel Lift Video.](#)



## #Z10-1025X Trailer/5th Wheel Hitch

This multi-function accessory comes complete with a 2-5/16" ball and 20,000 lb Pintle for trailer towing. No tools required to use on a fifth wheel plate or goose-neck 5th wheel travel trailer. Drops into any 2" fork receiver.



**#Z1304-81a 5" Height Extender**

Zacklift Height Extenders drop into any 2" fork receiver. Also any fork with a 2" shaft can be positioned in the Extenders for reaching a difficult -to-reach location or for gaining extra height when towing.

Also available in 10"

**#Z1304-3X8 Steertek™ Fork 3 x 8**

Axle Forks for the Hendrickson Steertek™ composite axles. Specially designed for the Hendrickson Airtek/Steertek front axle. Special care must be taken when lifting the air suspension hollow beam front axles as currently being used on many of the Volvo VNT and Freightliner Century Tractors.

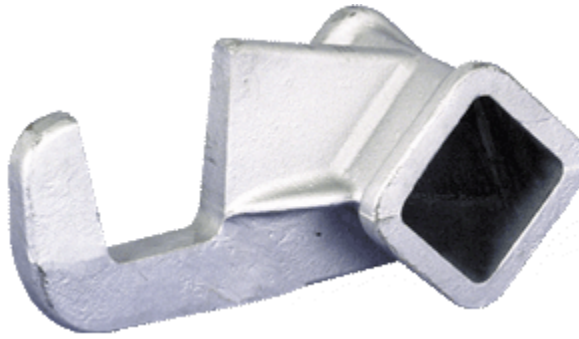
**#Z1304-66 Locking Spring Fork**

Cast from high strength steel, these rugged forks pin over the spring shackle for an alternate hook-up location. The fully pivoting load point allows for the necessary range of motion of the vehicle-in-tow for safe, non-binding transporting.



#Z1304-88 **Scoop-N-Go Forks**

Fork & fork receiver all in one, the Scoop-n-Go provides the lowest profile available with a 6" overall height. The Scoop-n-Go slides easily under chrome bumpers and costly valances. Made of super strength cast steel, the Scoop-n-Go has no moving parts. This versatile accessory will become the primary fork for all hard-to-get jobs.



**Deluxe Accessory Package:** A collection of the most requested Zacklift accessories, offered at a discount when purchased together. All of above Zacklift accessories are included, Heavy Duty Multi-position Wheel Lift, Trailer/5<sup>th</sup> Wheel Hitch, 5" Height Extenders, Steertek Forks, Locking Spr Forks, Scoop-n-Go Forks.

#Z10-1026X **Chain Attachment Block**



**Words from KARL**

"A few years back, I came up with the accessory that we offer called the **CHAIN ATTACHMENT BLOCKS**. Zacklift is always listening to their customers. They really want to know about their ideas for needed accessories and ideas for new shapes of forks as the industry changes. The end user is the expert. They're the ones out there, day in and day out, challenging the equipment. Putting it to the test."

"On this occasion, I was called out to tow a tractor trailer that was broken down in the middle of a busy intersection. We've all been there. The first thing the police of says when you arrive is, **'Hurry up. How long will this take. We've got to get traffic moving.'** I unfold the Zacklift and look under the front of the truck. It's a set ba axle Freightliner. They have a plastic front bumper that sets really low, and this truck had low profile rubber. That's what's nice about having the right equipment to d job. With Zacklifts low profile head and angled cross bar I was able to easily hook up without double picking. This is where I thought: Now if there was a faster way to safely secure the axle I could be out of here even quicker. I moved the truck out of the way and the officer followed me and thanked me for getting the job done in re time, He said **'Man you are good'**. I didn't bother to tell him that anyone looks good when operating the best equipment money can buy." "I went back to the shop a built a set of these **BLOCKS** and tested them for quite some time. Now I can get out of the middle of an intersection even quicker. **And that's a good thing !!**"

#Z1304-1X2.5 **1 x 2.5 Fork**



Only 1" high and 2.5 inches across at the base. Works great on front axles and low clearance.

#Z1304-2X4 **2 x 4 Fork**



Only 2" high and 4 inches across at the base.

#Z1304-6X6 **6 x 6 Fork**



#Z1304-9X4 **9 x 4 Fork**



**Standard  
Equipment**

---

**Standard  
Equipment**

#Z1304-65 **Chain Fork**

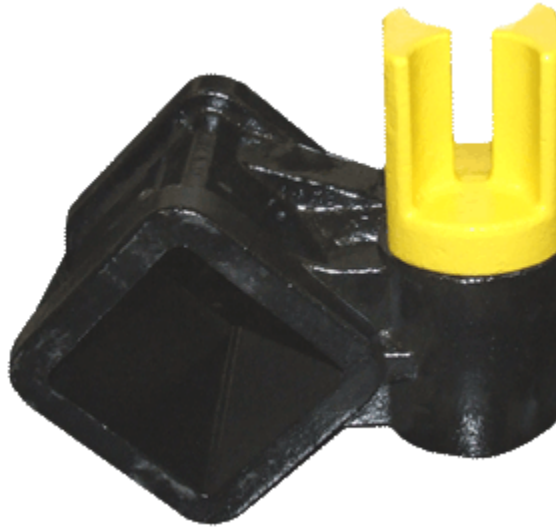
Slotted for 1/2" chain, provide a tow-bar style hook-up.



**Standard  
Equipment**

#Z1304-63a **Fork Receiver (fits Zacklift  
only)**

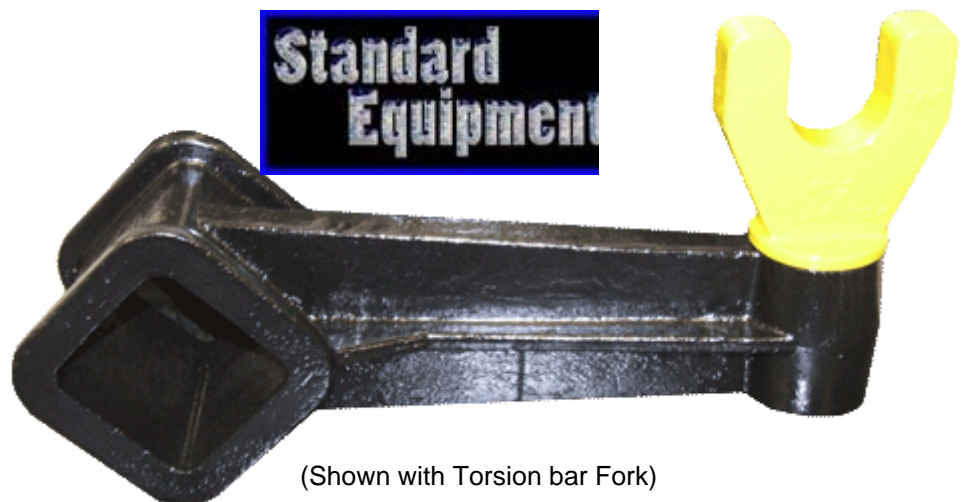
(Shown with Chain Fork)



#Z1304-78 **Reach Extenders**

**Standard  
Equipment**

Reach Extenders provide 12" of additional reach to the Zacklift, very effective in getting around rear axle housing and awkward steering boxes. Also works great for getting around Detroit oil pans.



(Shown with Torsion bar Fork)



#Z1304-6x6.5

**Offset Rear Axle Fork**



#Z1304-61

**Torsion Bar Fork**



#Z1304-71

**Small V Fork**

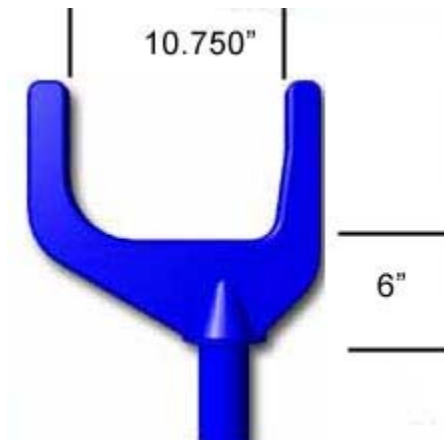


#Z1304-83

**I-Bolt Fork**



#Z1304-82a **Big Mack Rear End Fork**



The Big Mack a 10-3/4" opening by 6" high. Sold separately or in pairs.

## DP 20,000 lb. or DP 25,000 lb. Planetary Winch

20,000 lb or 25,000 lb DP Planetary Winch Manual Kick out and tensioner included, along with Zacklift mounted cable-guide, necessary valve section.



## #Z10-1019A Cable Guide

With a 6" diameter sheave accommodating up to 3/4" cable, the Zacklift cable guide can be used in conjunction with any deck winch. The guide mounts on top of the main vertical section of any Zacklift. Factory installation included. (Specify model of Zacklift)



## #Z40-1014X Wireless Remote Control

Wireless Remote Control This pocket size remote control will provide limitless positioning during hook-up. The high quality chassis- mounted decoder updates a digital signal several times per second to eliminate outside interference. The unit is compatible with all existing Zacklift equipment. It is easily operator installed in less than 30 minutes. Once you try it you can't work without it.



## #Z1304-59m 12 Volt Power Pack

12 volt self contained power system. A NO CHARGE OPTION ON ALL HEAVY DUTY ZACKLIFTS. Includes all pre-plumbed hoses, fittings, and electrical connections. Also includes roto-molded weather cover and super-test remote control.

