



**“ You build the very best underlift there is.
I run three of them
and it was years and years before
I ever needed to replace anything.
When people ask me about buying a lift,
I tell them to buy Zacklift. ”**

Jack Kane, Suburban Towing

**“ I can hook up to anything. Tow anything.
And scale in ANY state. Thanks, Zacklift! ”**

TRICK MY TRUCK'S
Bryan Martin

“ We couldn't justify buying a complete recovery truck. Zacklift looked like the best value. Since then it's paid for itself and we've purchased two more. We've never had a problem with any of them! ”

Wayne Brisco, El Pasco Towing

Every rating and reach of Zacklift Underlift is available in the removable FIFTHWHEELER or for permanent mounting on any conventional wrecker or bare cab and chassis.

4 ratings and reaches to choose from.

Retracted lift rating

Extended lift rating

Tow rating

A. Retracted distance

B. Reach, true usable reach

C. Reach with 12" Reach Extensions

D. App. reach, center of axles to forks

E. Distance from tailboard when stored

F. Upward tilt, max lifting height

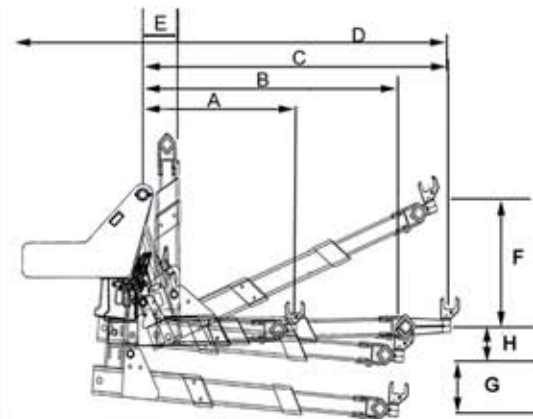
G. Tilt below ground

H. Downstroke on lift cylinder

Weight permanent mount

Weight FIFTHWHEELER

	Z18	Z30	Z303	Z403
Retracted lift rating	18,000	32,000	32,000	40,000
Extended lift rating	13,000	18,000	13,000	18,000
Tow rating	85,000	85,000	85,000	100,000
A. Retracted distance	49"	56"	60"	67"
B. Reach, true usable reach	86"	100"	119"	135"
C. Reach with 12" Reach Extensions	98"	112"	131"	147"
D. App. reach, center of axles to forks	141"	155"	174"	190"
E. Distance from tailboard when stored	10"	11"	11"	12"
F. Upward tilt, max lifting height	22° 62"	22° 65"	22° 71"	22° 80"
G. Tilt below ground	8° 11"	8° 13"	8° 15"	8° 21"
H. Downstroke on lift cylinder	17"	17"	17"	17"
Weight permanent mount	1507	1688	1861	3214
Weight FIFTHWHEELER	2402	2583	2756	4109



Z303



Z403



Z30



Z303



Z18



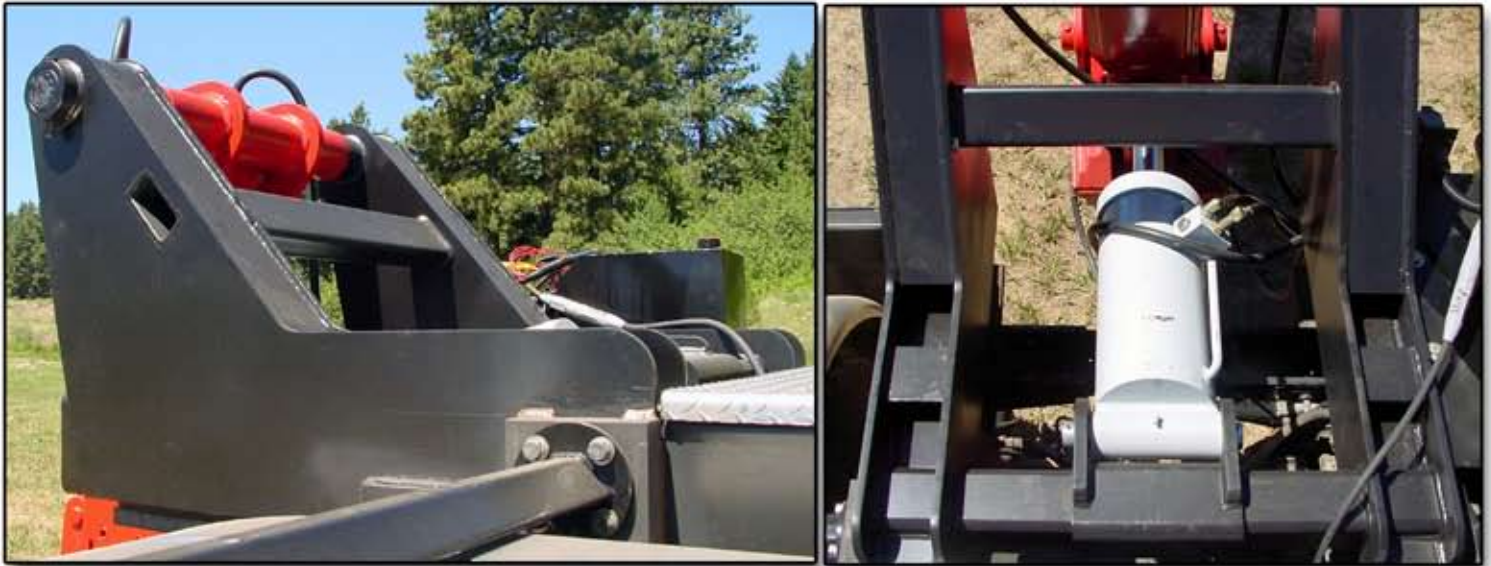
Z403



MOUNTING

Stationary:

All Zacklift underlifts can be either stationary mounted or mounted as a FIFTHWHEELER. In the stationary application, all Zacklift underlifts mount on any chassis make, model or year; and any bare frame or on a conventional wrecker. Location from ground, tailboard location, positioning of the critical tilt cylinder, and all elements of mounting, have been carefully pre-engineered so that the Zacklift can be easily self-installed if required.

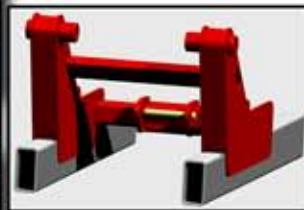


A housing is provided, which integrates the crossmember, for error-free positioning of the tilt cylinder, and the mounting saddles. These saddles or "ears", are perfectly positioned to the cross-member for "drop-in" convenience on the subframe. The saddles are designed for trimming around any obstruction. A required location from the ground to the pivot boss point is provided. Unlimited mounting on any truck height is possible. These pivot bosses adjust to accommodate any truck width, foreign or domestic.

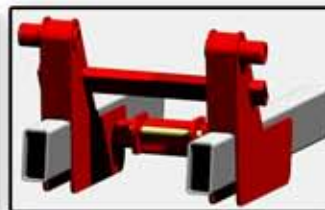
The truck's subframe is securely reinforced with the Zacklift cross-member and secondary strut. Detailed subframe specs are available from Zacklift. All step by step stationary mounting instructions are included with the Zacklift underlift, and can be down loaded at www.zacklift.com.



Drop-in housing



Pivot bosses



Frame height



Stationary Mount



STANDARD EQUIPMENT

Height x Width



FORKS

Chain Forks pair Slotted for 3/8" chain, provide a Tow-Bar like hook-up. **All forks are high tensile cast steel**

1 x 2.5 Forks pair **General low profile front axle forks.** These specially engineered forks provide safety by snugly fitting around axle.

2 x 4 Forks pair **Solid support for all low profile axle jobs.** The most in any line-up.

6 x 6.5 Forks pair **Universal wide and tall forks for excellent clearance when picking by the frame, or crossmember, or for turning sideways on front springs.**

9 x 4 Forks pair



Karl, using optional Heavy Duty Multi Position Wheel Lift.



12" Reach Extenders increase the reach with any fork and move a large rear differential away from the underlift's crossbar.
(Shown with optional Torsion Bar Fork)

1 receiver, 3 settings



Zacklift's hydraulic components have been carefully selected for the highest quality, and most trouble-free, long-life service possible. The U.S. manufactured **sectional valve** features electric over hydraulic operation, not lower quality air operation. Additional sections may be conveniently added.

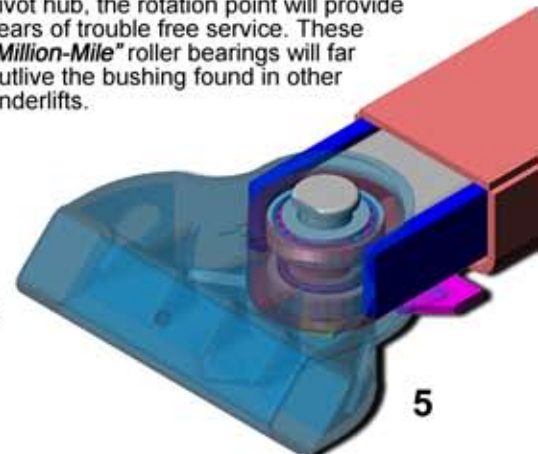


The valve includes both levers and a **15' corded remote control**. The additional lever operation assures no down time if a remote control is ever left behind. A wireless remote control is always an option with either system.



If self contained power is required, Zacklift offers a **NO-CHARGE OPTION** of a 12 Volt Electro-Hydraulic Power System 15' corded remote also included. Both choices also include a custom, **roto molded cover**.

The exceptionally low profile of the Zacklift allows for more single picks under low bumpers and airfoiles. Engineered with **Timken Roller Bearings** in the critical pivot hub, the rotation point will provide years of trouble free service. These **"Million-Mile"** roller bearings will far outlive the bushing found in other underlifts.



FIFTHWHEELER

patent pending



Karl Bardroff
Zacklift National Sales Director



Larry Wright
Total Truck & Equipment
Van Buren, AR



Because there are no limitations for height, width, wheelbase, or fifth wheel location, mounting on multiple trucks is easily achieved.

“I was worried about spending the money, thinking I'd only use it once in a while. Instead, I use it non-stop. The Zacklift equipment does what it says it will do, and so does Karl. He's knowledgeable and accessible, before and after the sale. That's something hard to find these days.”

Larry Wright
Total Truck & Equipment

Tow everything a state-of-art tow truck can do at a fraction of the cost. Mount securely with no welding or drilling. All mounting hardware removes completely during the quick drive-off leaving the truck's fifth wheel available for full unobstructed use and the truck free of modifications.

“I have two trucks that I change my Zacklift Z303 FIFTHWHEELER back and forth on. It's easy and THERE'S REALLY NOTHING OUT THERE THAT COMPARES.”

Butch Cox
Butch's Body Shop

The FIFTHWHEELER is available in every rating and reach offered by Zacklift. The Zacklift utilized in the FIFTHWHEELER application is a standard, proven Zacklift underlift. When equipment needs change, the Zacklift can later be mounted on any wrecker or bare chassis.

The FIFTHWHEELER comes complete with a premium quality, electronic valve, with levers and corded remote control for connection to existing PTO or choose the NO-CHARGE option of a highly dependable electro-hydraulic power pack. The FIFTHWHEELER includes all hoses, fittings and air lines which are fully routed and connected. All wiring is pre-engineered for immediate hook-up and use.

Included with the Zacklift FIFTHWHEELER are front stabilizer stands, fork holders and factory 'fire-truck-red' on the Zacklift underlift and 'chrome-silver' on the mounting beam. The FIFTHWHEELER includes all Zacklift high-tensile cast steel standard equipment.

See page 5, STANDARD EQUIPMENT.

Tried and tested in the toughest markets from U.S. Air Force Operations in the Middle East, to city governments for garbage packers, Zacklift has been chosen as the toughest, most valuable towing tool available. Zacklift is the name chosen by America's truck manufacturers, including Freightliner, Sterling and Navistar.

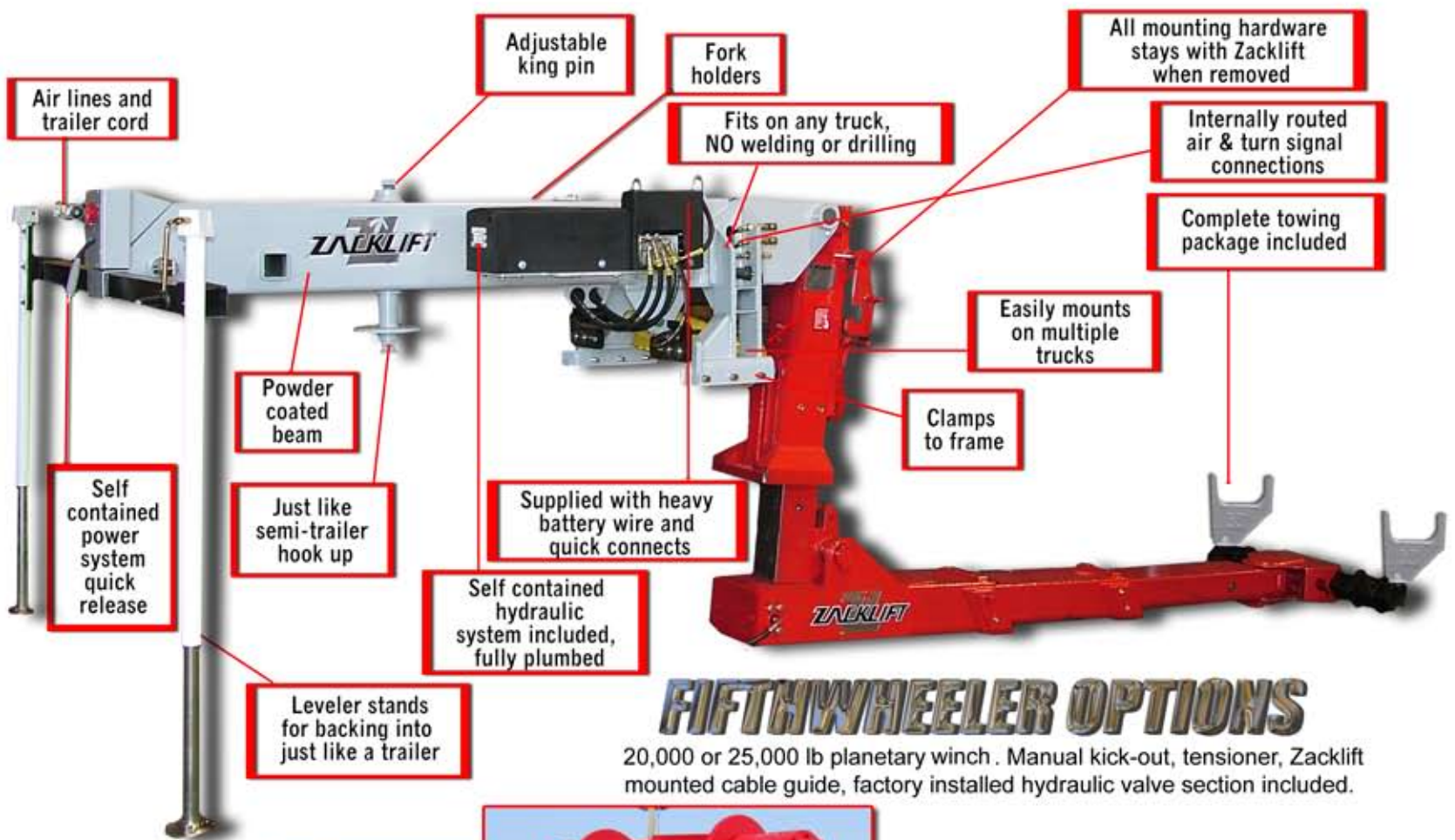
“I tow between 30 and 50 trucks per week. Tractors, trailers, buses and motor homes. I've had NRC and KKK 5th wheel units and my Z303 FIFTHWHEELER from Zacklift is by far the best unit. The long reach is great. I got more attachments standard than with the others, too. The 12" reach extensions are great on Detroit oil pans. No more double picking.”

Larry Loomis
Loomis Towing

“You make such a great product. This thing runs nonstop. Any driver can jump in it and go. It runs circles around my big wreckers. To be honest, we have it on a 260" wheelbase KW and I've towed loaded tractor trailers. You're not going to get that out of an NRC. We're getting a truck ready for a Zack Z403 next.”

Jim Cady
10 West Towing

FIFTHWHEELER SPECIFICATIONS



FIFTHWHEELER OPTIONS

20,000 or 25,000 lb planetary winch. Manual kick-out, tensioner, Zacklift mounted cable guide, factory installed hydraulic valve section included.



NO CHARGE OPTION: 12 VOLT SELF CONTAINED POWER SYSTEM or choose ELECTRIC OVER HYDRAULIC valve for pto hook-up. Both are fully plumbed, wired and internally routed in FIFTHWHEELER beam. Includes roto-molded weather cover and super-tested, corded remote control.

Bryan Martin star of CMT's TRICK MY TRUCK says:

"I looked around and kept hearing about the Zacklift FIFTHWHEELER. I called Zacklift and talked to Karl. He was really helpful. I couldn't find anything else on the market that compared to all the features in the Zacklift. Now I tow everything that a quarter million dollar tow truck can do. We run about a six hundred mile radius from Joplin Missouri. We run through scales all the time and never have to worry about it. I SHOULD HAVE BOUGHT THIS FIFTHWHEELER A LONG TIME AGO."

FENDERS and TOOL BOXES sold separately or in pre-fitted sets. .090 x 103" (can be trimmed) aluminum ¼ fenders, with factory engineered mounts. 36 x 18 x 18" aluminum tool boxes secured to fenders. Both REMOVE COMPLETELY when Zacklift is removed. All FIFTHWHEELER beams include sockets for secure positioning of fender mounts.

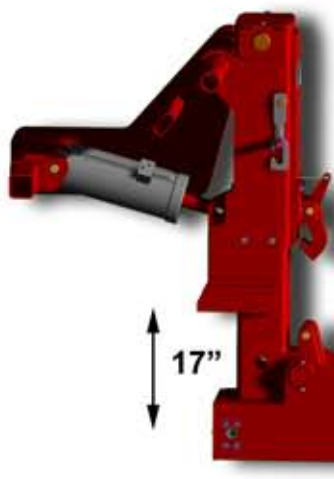
Additional options include wheel lift, PTO/pump, and all Zacklift accessories.

See page 10, ACCESSORIES



3 INDEPENDENT CYLINDER FUNCTIONS

LIFT



0° load angle provides an unbeatable percentage of single picks. 17" up and down function. Lift and tilt not combined in one function like other underlifts. The super powerful lift cylinders deliver power at full extension.



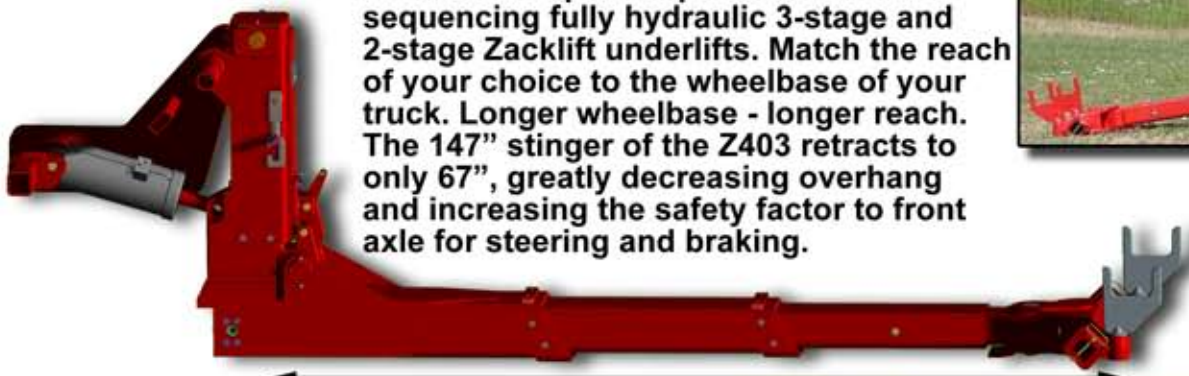
TILT

Zacklift's trademark 30° tilt range protect costly bumpers, chrome trim, oil pans and airfoiles. Underlifts with little or no tilt cost time in removing bumpers and cost money in replacment, repair, and insurance premiums.



Extend

There are no pins to pull with the self sequencing fully hydraulic 3-stage and 2-stage Zacklift underlifts. Match the reach of your choice to the wheelbase of your truck. Longer wheelbase - longer reach. The 147" stinger of the Z403 retracts to only 67", greatly decreasing overhang and increasing the safety factor to front axle for steering and braking.



Accessories



#Z10-1012X

Heavy Duty Multi Position Wheel Lift
Extend the use of your Zacklift to a damage free wheel lift with this uniquely engineered accessory. The angled wheel retaining arms adjust to accommodate tire sizes from 15" to 24.5". The assembly comes complete with a second grid cross bar to allow for wide hauls such as tractors or luxury coaches from the front. The longer cross bar is also perfect for use with frame forks to accommodate an exceptionally wide axle. The narrow 43" cross bar can be used for duals and small axles. The assembly includes 3" tie down straps and ratchets.



#Z10-1025X

Trailer/5th Wheel Hitch
This multi-function accessory comes complete with a 2-5/16" ball and 20,000lb pintle for trailer towing. Remove the fifthwheel adapter by pulling the pin. No tools required to use on a fifth wheel plate or goose-neck 5th wheel travel trailer. Drops into any 2" fork receiver.



BIG FOOT STIFFLEGS

SL-3800

Zacklift's BIG FOOT Stifflegs are engineered with Zacklift's trademark rugged construction. These anchors push a massive 38,000lbs in each leg and feature unbeatable wide-surface foot pads measuring more than a foot and a half across. Flip the foot and you've got a powerful angle claw.

Specifications

End to end, foot in flat position	53.5"
End to end, foot flipped down	65"
End to end no feet	47"
Feet width	18"
Cylinder travel	24"
Cylinder diameter	3"
Positioning from ground level	12"
Travel beyond ground level	12"
Recommend mounting angle	15
Outer tube diameter	7 x 7 x 3/8"
Inner tube diameter	6 x 6 x 3/8"
Cylinder out put at 2600 psi.	38,000 lbs.
P.O. Checks	Yes
2 valve sections	Yes
Hoses, fittings from legs to valves	Yes
Required gallons per minute	3 to 15



#Z1304-3X8 Steertek

Made for the Hendrickson Steertek™ composite axles. Specially designed for the Hendrickson Airtek/Steertek front axle 8-1/4 wide x 3" deep. Special care must be taken when lifting the air suspension hollow beam front axles as currently being used on many of the Volvo VNT.

#Z10-1019A

Cable Guide
Accommodating up to 3/4" cable, the Zacklift cable guide can be used in conjunction with any deck winch. The guide mounts on top of the main vertical section of any Zacklift.



#Z1304-66

Locking Spring Forks
Cast from high strength steel, these rugged forks pin over the spring shackle for an alternate hook-up location. The fully pivoting load point allows for the necessary range of motion of the vehicle in tow for safe, non-binding transporting.

#Z1304-81a

5" Height Extenders
Zacklift Height Extenders drop into any 2" fork receiver. Any fork with a 2" shaft can be positioned in the Extenders for reaching a difficult-to-reach location or for gaining extra height when towing.



#Z10-1026X

Chain Attachment Blocks
Great add-on for attaching chains to the Zacklift.



#Z1304-88 Scoop-n-Go

Fork & fork receiver all in one, the Scoop-n-Go provides the lowest profile available with a 6" overall height. The Scoop-n-Go slides easily under chrome bumpers and costly valances. Made of super strength cast steel, the Scoop-n-Go has no moving parts. This versatile accessory will become the primary fork for all hard-to-get jobs.



#DP-2000 #DP-2500

20,000 lb or 25,000 lb DP Planetary Winch
Manual Kick out and tensioner included, along with Zacklift mounted cable-guide, necessary valve section.



#Z10-1017X Deluxe Accessories Package

Includes Heavy Duty Multi-Position Wheel Lift, Trailer/Fifth Wheel Hitch, Locking Spring Forks, 5" Height Extenders, Scoop-n-Go Forks, and Steertec Forks.



"I run 11 states and never have to worry about scaling."

This thing tows everything.

Trucks, buses, even rear tows on vans.

With all the reach

it makes it easy to hook up."

Ned Coleman
L&N Truck Service

"Trash - trucks loaded dump trucks - drivers can't find anything they can't lift. I love it!"

Art Cristie, Brothers Towing II, Inc.

"This is our second Zacklift. Zacklift's really got it together. Plenty of reach - can pick up anything - is always reliable."

THANKS!TM Wes Ferry, Mid Iowa Towing

"My family's been in business for 75 years. We've worked a lot of wrecks and run a lot of equipment. I have a ZA03. It's just awesome!"

Vince Christner
Christner Services

"I've never done anything to my Zacklift. It just keeps going and going. I've never even leaked a drop of oil. That's why I want to buy another one. I'll tell them about it myself."

Thomas Rynge
Rynge Auto

WWW.ZACKLIFT.COM

509-674-4426

email@zacklift.com

1102 E 1st Street

Cle Elum, WA 98922

Financing Available

ZACKLIFT