



**#1) UNFOLD CAUTION -** Do not unlock J-Lock when Zacklift is folded. Unlocking when Zacklift is folded could result in injury or death.



**#2)** After unfolding raise Zacklift to clear J-Lock pin. Push and hold lowering Zacklift until clear of J-Lock pin.



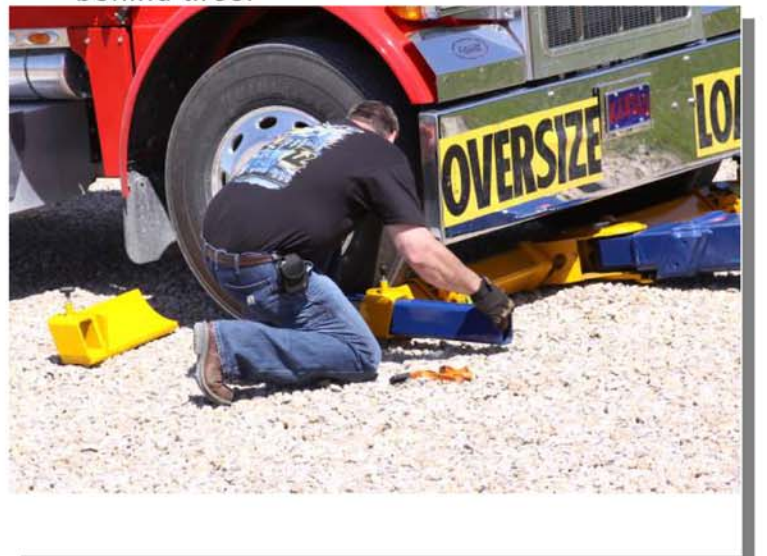
**#3)** Lower Horizontal section until it is about 2" from the ground.



**#4)** Remove wheel trays and place on ground behind tires.



**#5)** Extend horizontal section till crossmember bumps tires.



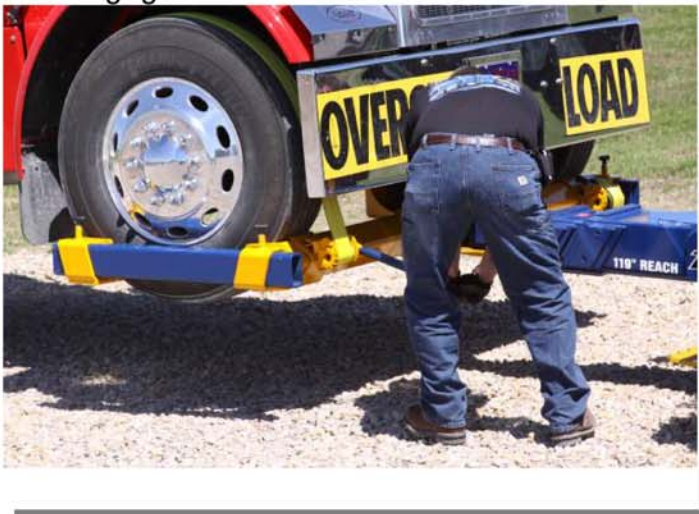
**#6)** Adjust wheel rod until proper length is achieved. Slide strap winch to align with tire.



#7) Slide wheel tray onto wheel rod and against tire. Make sure pull pins are both fully engaged



#8) Lift Zacklift fully into J-Lock. Pull strap over wheel and place hook into slot in rear of wheel tray.



#9) Tighten strap with bar provided



#10) Tilt up to get proper towing height.

**Z18/Z30/Z402**



**IMPORTANT: Leave 2" Clearance**

**Caution!!!**

Do Not use Fold-up feature to gain height. Using fold to gain height will damage Zacklift and void all warranties and could also cause personal injury. The fold feature is to be used exclusively for the purpose of folding the Zacklift into storage position. Use tilt function for gaining height.

#11) Z403/Z303: Extend middle horizontal extend tube at least 2" from outer horizontal extend tube. This will create an equalization of pressure with inner tube, allowing head to pivot properly during towing. The head will appear to be locked against the inner extend tube but will disengage when turning.

**Z403 Z303**



**2" Minimum**

### Federal Regulation 49CFR.71

(10) Safety devices in case of tow bar failure or disconnection

(i) the towed vehicle shall be connected to the towing vehicle by a safety device to prevent the towed vehicle from breaking loose in the event the tow-bar fails or becomes disconnected. When safety chains or cables are used as the safety device for that vehicle, at least two safety chains or cables meeting the requirements of paragraph (h)(10)(ii) of this section shall be used. . . (ii) if chains or cables are used as the safety device, they shall be crossed and attached to the vehicle near the points of bumper attachments to the chassis of the vehicles. The length of chain used shall be no more than necessary to permit free turning of the vehicles. The chain shall be attached to the tow-bar at the point of cross or as close to that point as is practicable.

### Federal Regulation 49crf393.1

Every motor carrier..., and employees directly concerned with the installation and maintenance of equipment and accessories shall comply and be conversant with the requirements and specifications of this part, and no motor carrier shall operate any vehicle or cause or permit to be operated, unless it is equipped in accordance with said requirements and specifications.



- #12) Secure load to towing vehicle with Safety Chains. Failure to secure to vehicle in tow voids warranty.

